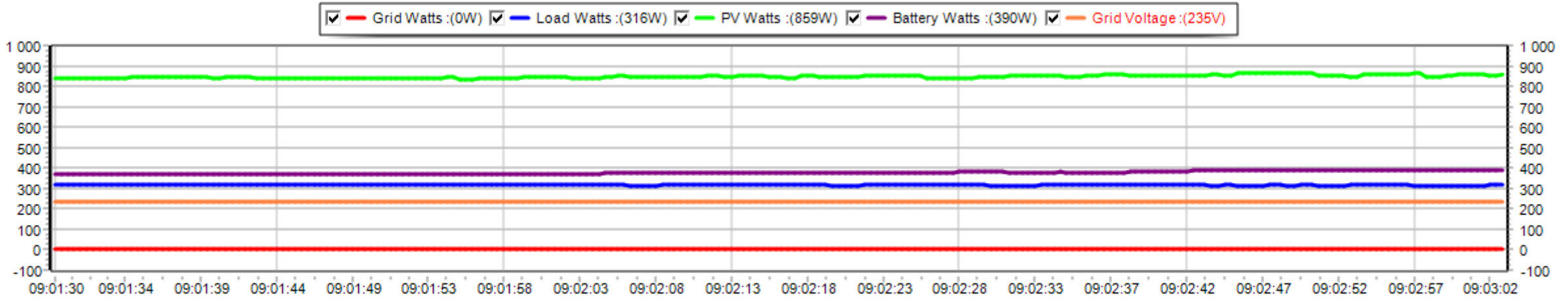
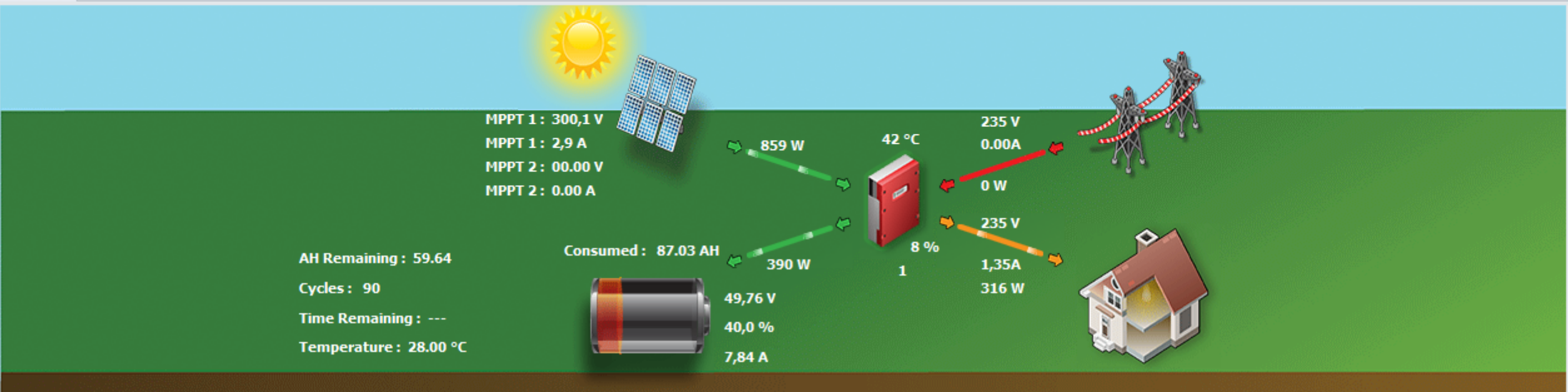


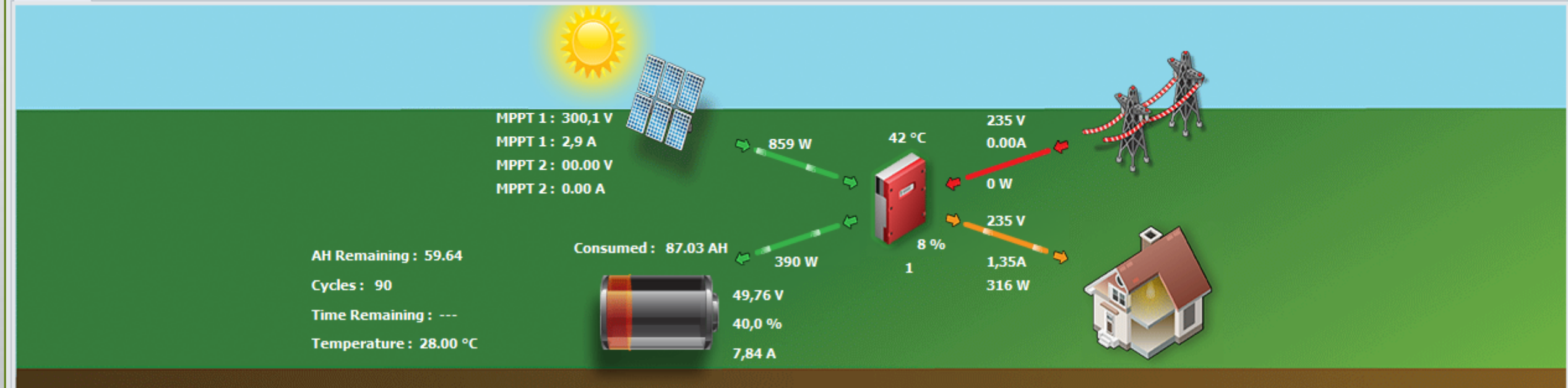
Inverter Control Centre



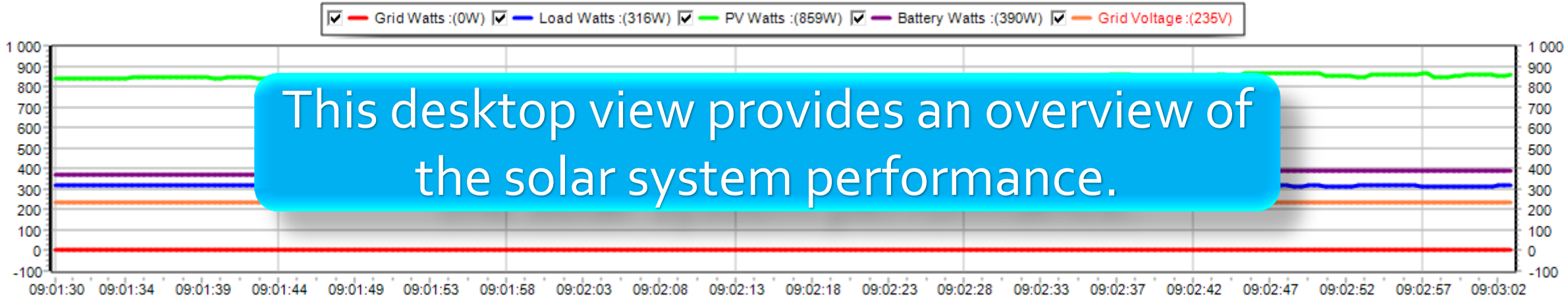
Introduction to MQTT

Version: 1.0.9



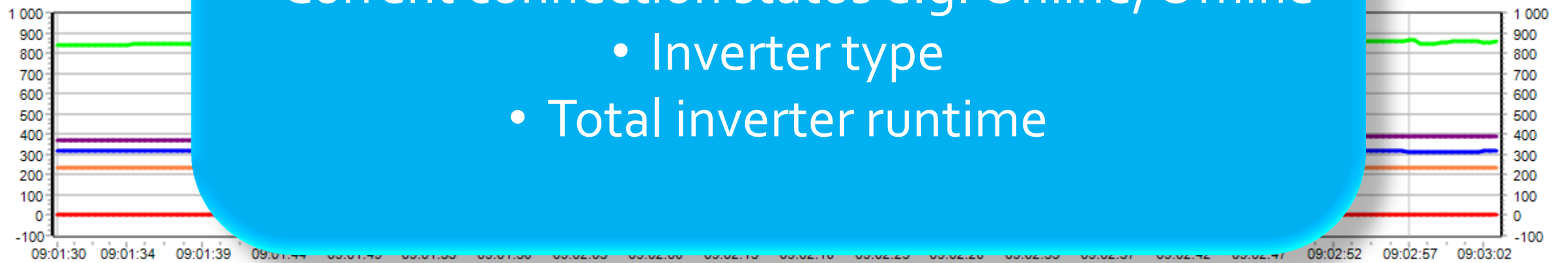


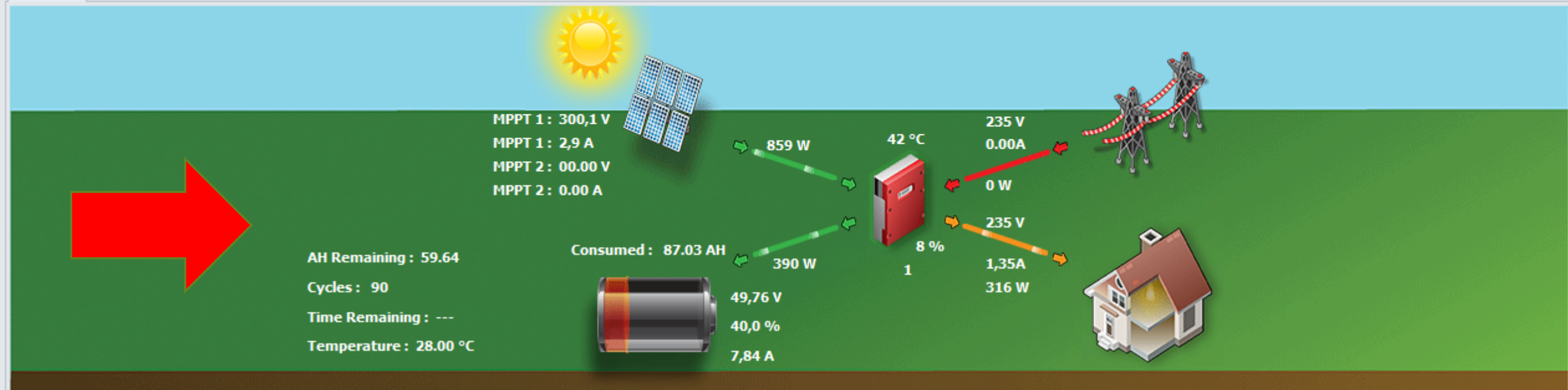
This desktop view provides an overview of the solar system performance.



Top taskbar provides the following information:

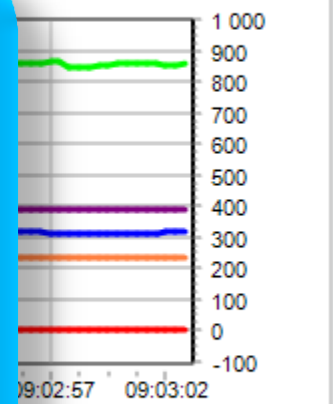
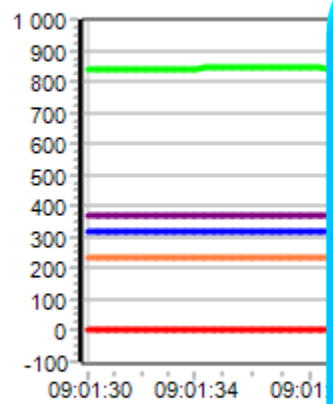
- Server IP address & Port number
- Current connection status e.g. Online, Offline
 - Inverter type
 - Total inverter runtime

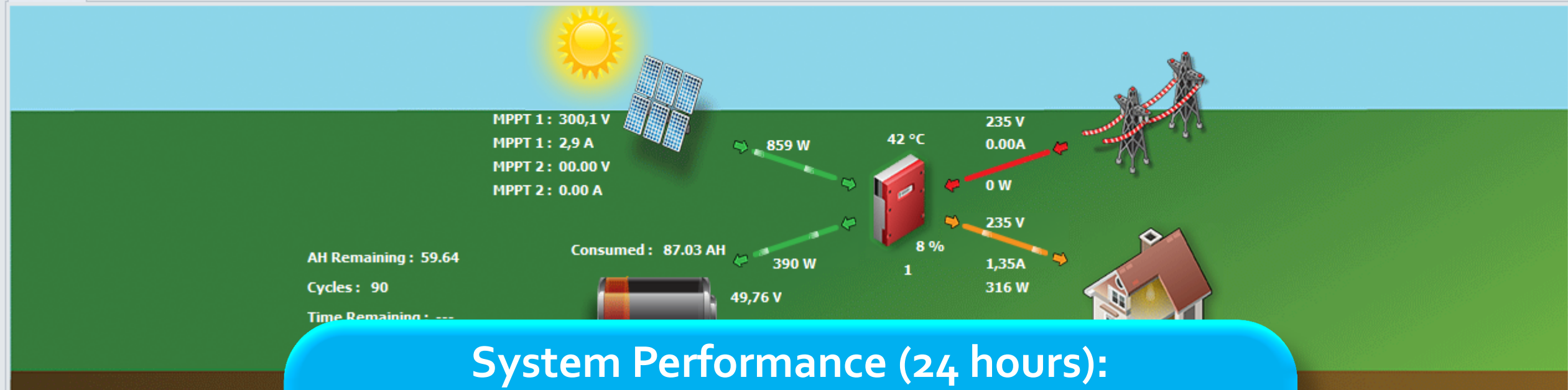




This animated view provides a real-time overview of the current system performance:

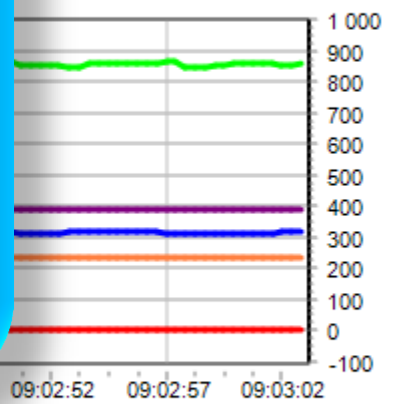
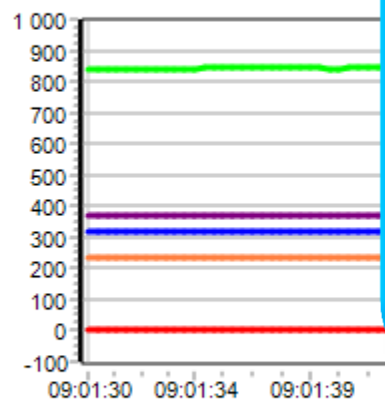
- Grid Consumption
- PV production
- Battery storage availability
- Current load consumption





System Performance (24 hours):

- Grid Usage
- Total Usage
- Solar Production
- Efficiency
- Maximum load (hour/day)



Ip: 192.168.1.32

Port: 1883

Online

Connected to Server


Inverter Runtime: 22:13:09

Inverter : Running : Infinisolar Super

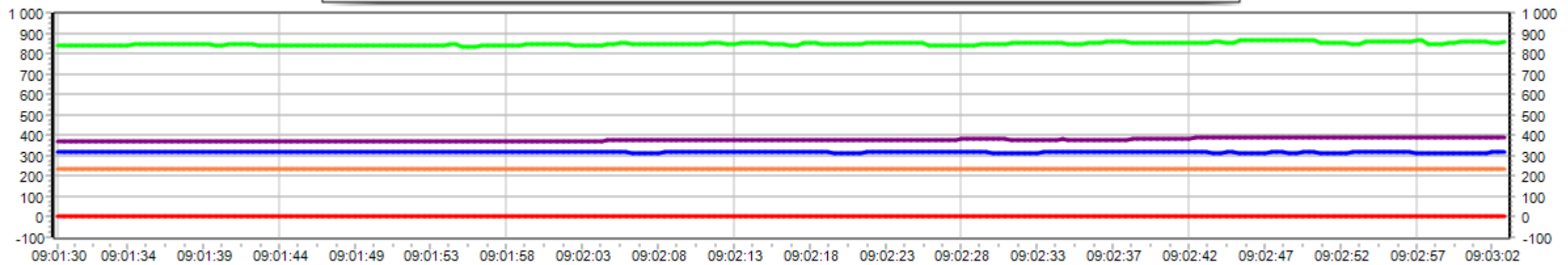
DashBoard Grid Trends Battery Trends PV Trends Overview Settings

Real-time graphical display:

- Grid Watts
- Load Watts
- PV Watts
- Battery Watts
- Grid Voltage



Grid Watts :(0W)
 Load Watts :(316W)
 PV Watts :(859W)
 Battery Watts :(390W)
 Grid Voltage :(235V)



Version: 1.0.9

Grid Use
0,010

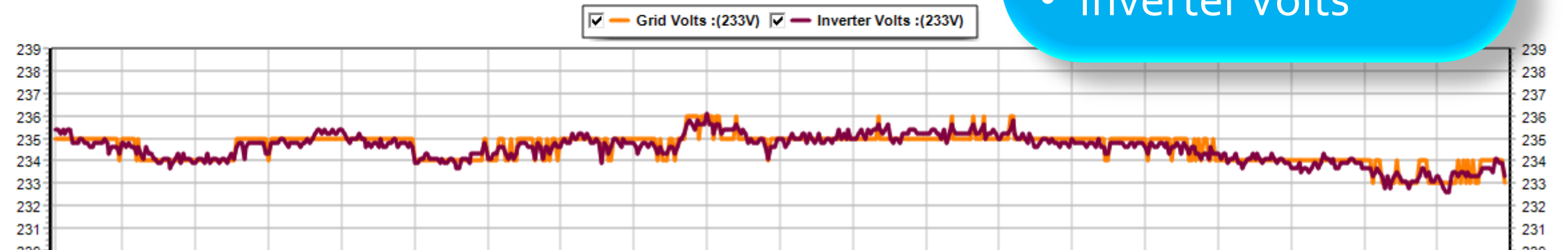
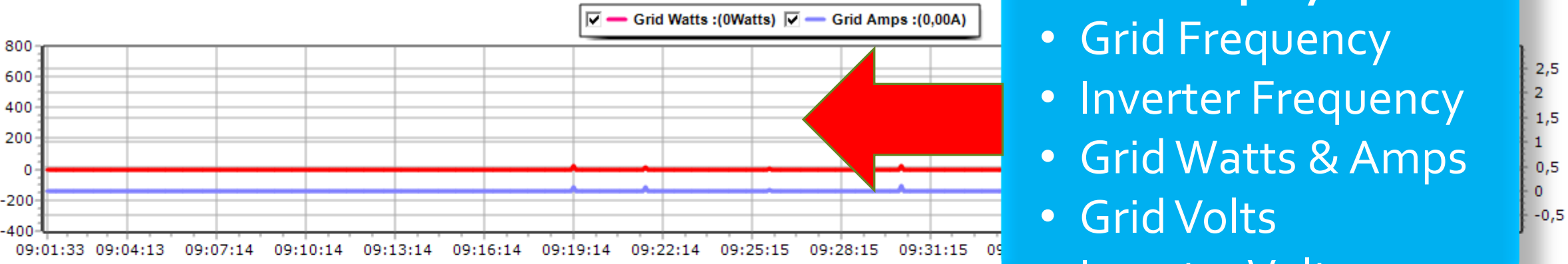
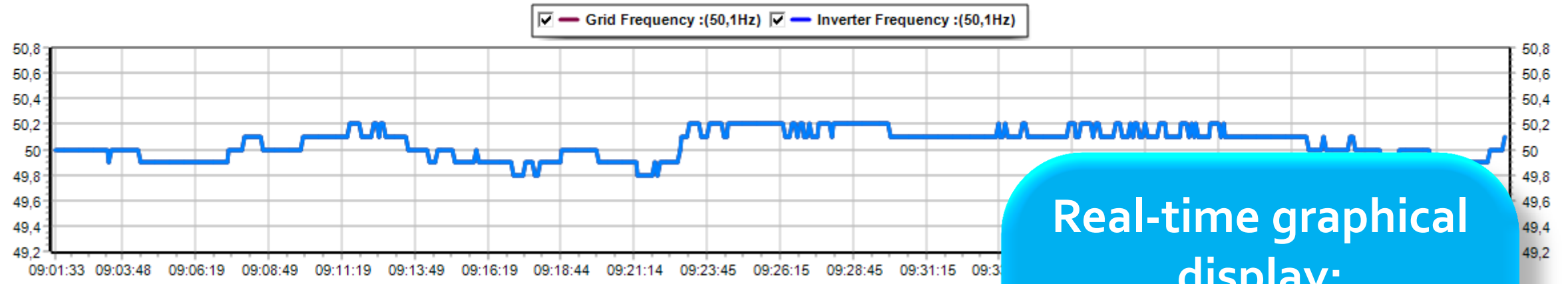
Total Use
1,450

Solar Produced
1,560

Efficiency
0,46

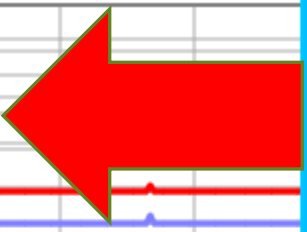
Max Load Day
2125
Max Load Hour

Max Solar Day
864
Max Solar Hour

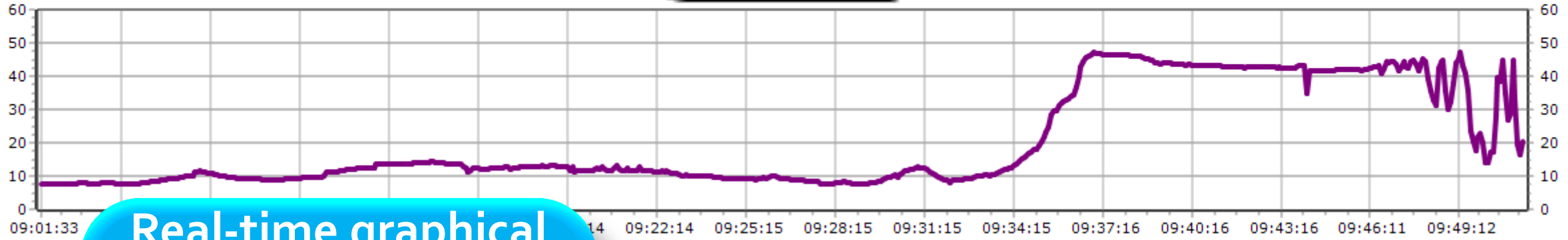


Real-time graphical display:

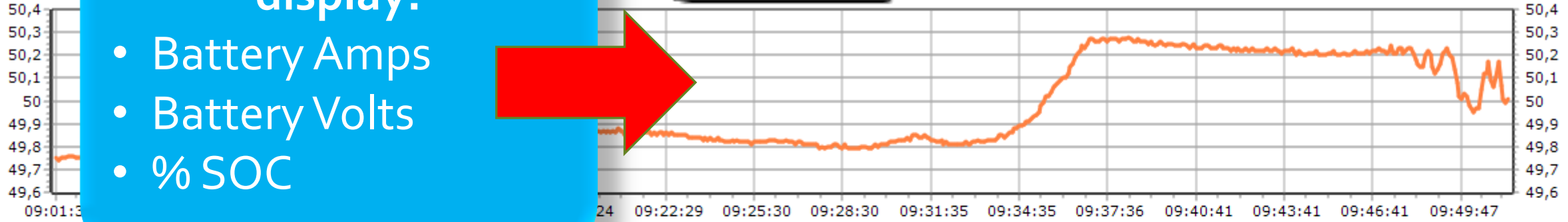
- Grid Frequency
- Inverter Frequency
- Grid Watts & Amps
- Grid Volts
- Inverter Volts



Battery Amps :(20,29A)



Battery Volts :(50,0V)



%SOC :(52%)



Real-time graphical display:

- Battery Amps
- Battery Volts
- %SOC

Ip: 192.168.1.32

Port: 1883

Online

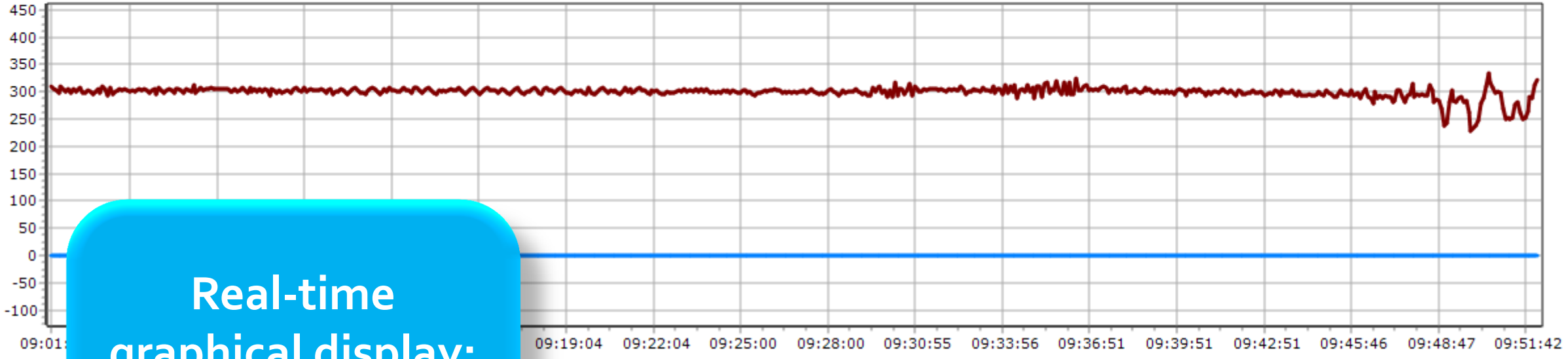
Connected to Server

Inverter Runtime: 23:02:15

Inverter : Running : Infinisolar Super

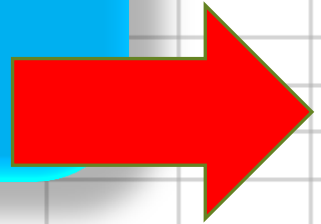
DashBoard Grid Trends Battery Trends PV Trends Overview Settings

MPPT 1 Volts :(321V) MPPT 2 Volts :(0V)

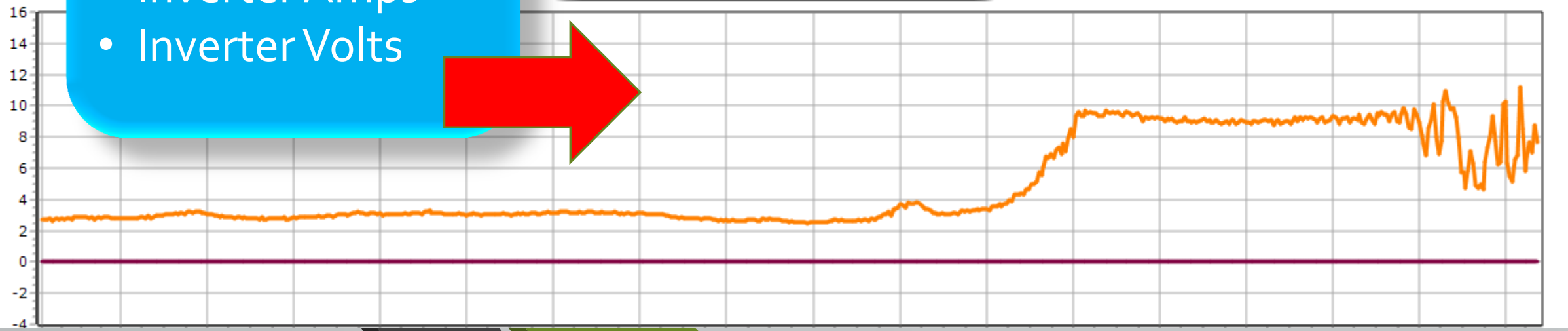


Real-time graphical display:

- Inverter Amps
- Inverter Volts



MPPT 1 Amps :(8A) MPPT 2 Amps :(0A)



Ip: 192.168.1.32

Port: 1883

Online

Connected to Server

Inverter Runtime: 23:03:01

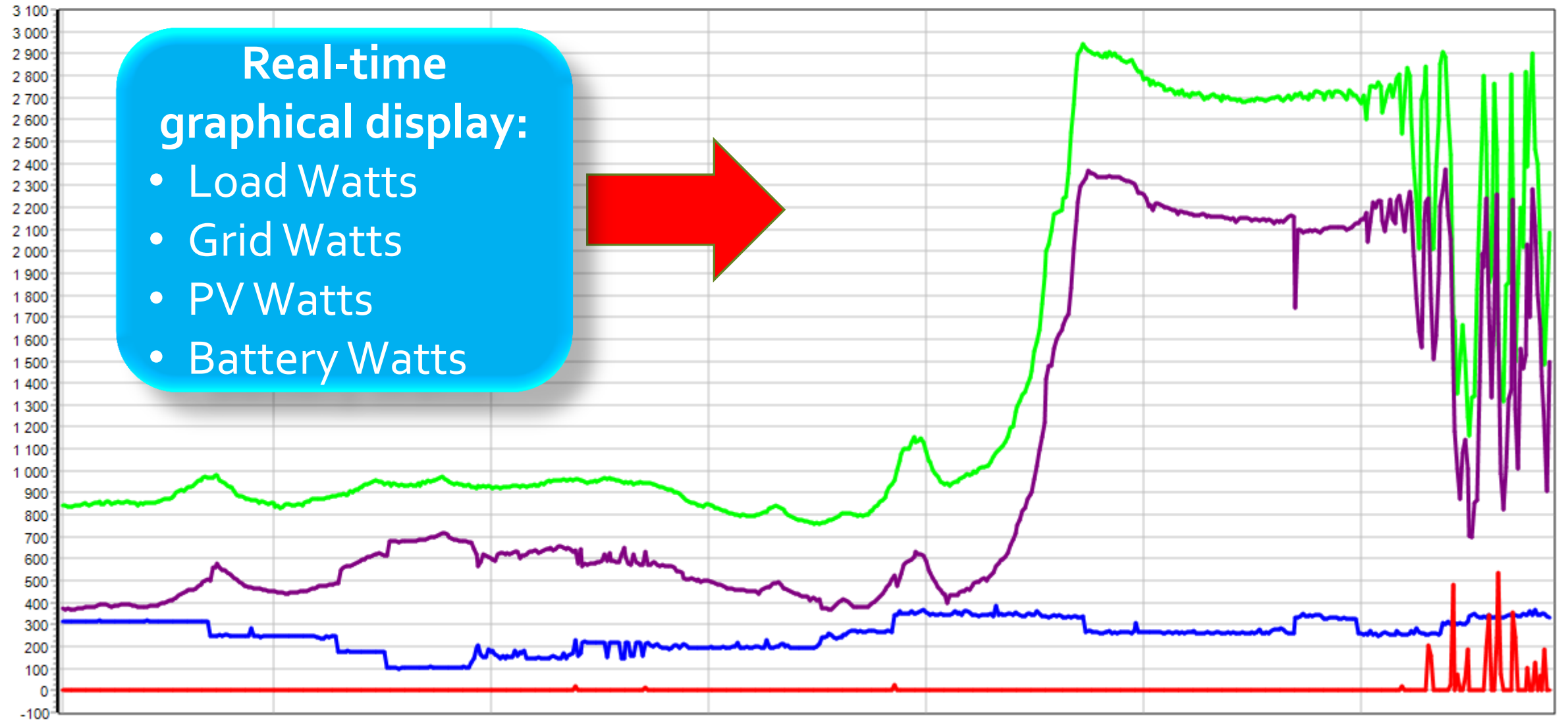
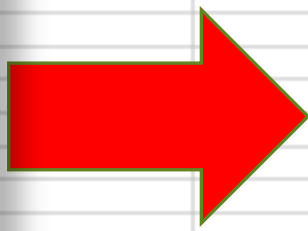
Inverter : Running : Infinisolar Super

DashBoard Grid Trends Battery Trends PV Trends Overview Settings

Load Watts :(331W) Grid Watts :(0W) PV Watts :(2084W) Battery Watts :(1495W)

Real-time graphical display:

- Load Watts
- Grid Watts
- PV Watts
- Battery Watts



MQTT LoginMachine ID: 

Information of MQTT Setting:

- MQTT login details
- MQTT Machine ID
- Check if new updates are available
- Download new updates

Inverter Control Centre



**Additional information
available at:**

<https://iccsoftware.co.za/>